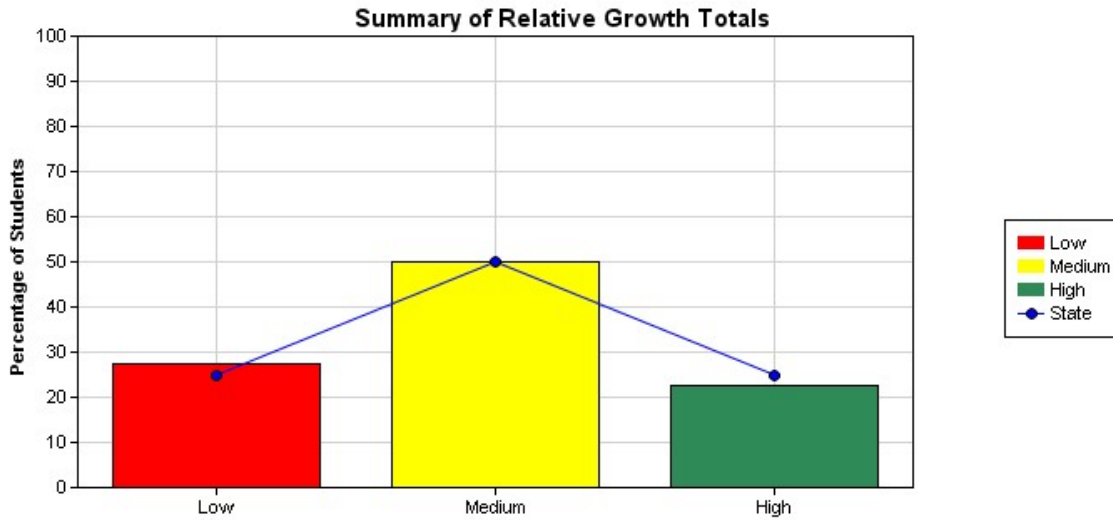
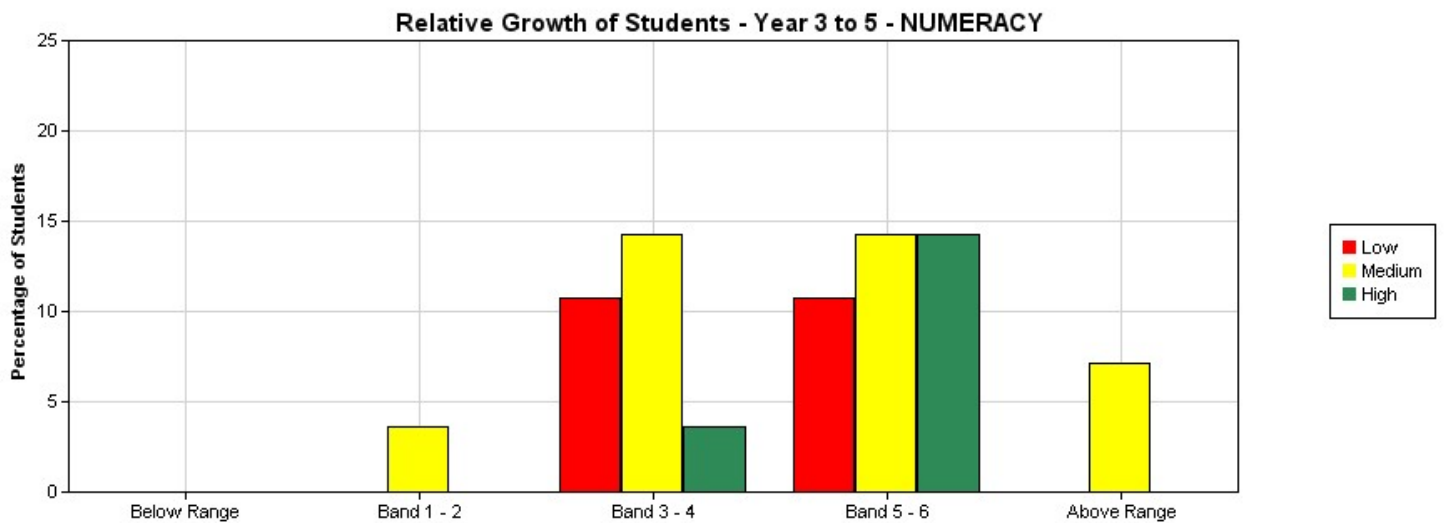


HARRISFIELD PRIMARY SCHOOL
Relative Growth Report - Graphical Summary for NUMERACY
National Assessment Program - Literacy and Numeracy Tests 2015
Year 5 - Class: All

[View - Information about this report](#)



	Low	Medium	High	Totals
Percentage of students - State	25	50	25	100
Percentage of students - School	27.27	50	22.73	100
No of Students - School	6	11	5	22



	Below Range			Band 1 - 2			Band 3 - 4			Band 5 - 6			Above Range		
	Low	Medium	High	Low	Medium	High	Low	Medium	High	Low	Medium	High	Low	Medium	High
% of Students	0	0	0	0	3.57	0	10.71	14.29	3.57	10.71	14.29	14.29	0	7.14	0
No of Students	0	0	0	0	1	0	3	4	1	3	4	4	0	2	0

Online tutorial assistance for reports can be accessed at <http://usingassessmentdata.vcaa.vic.edu.au/naplan/index.aspx>