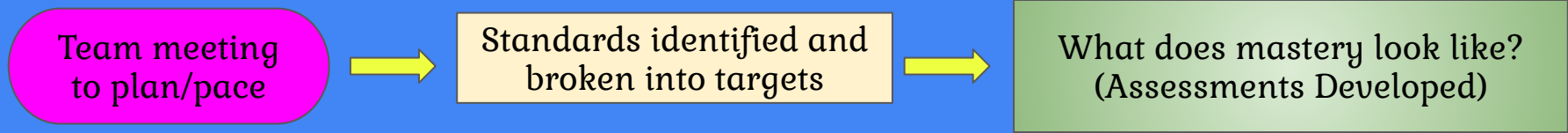
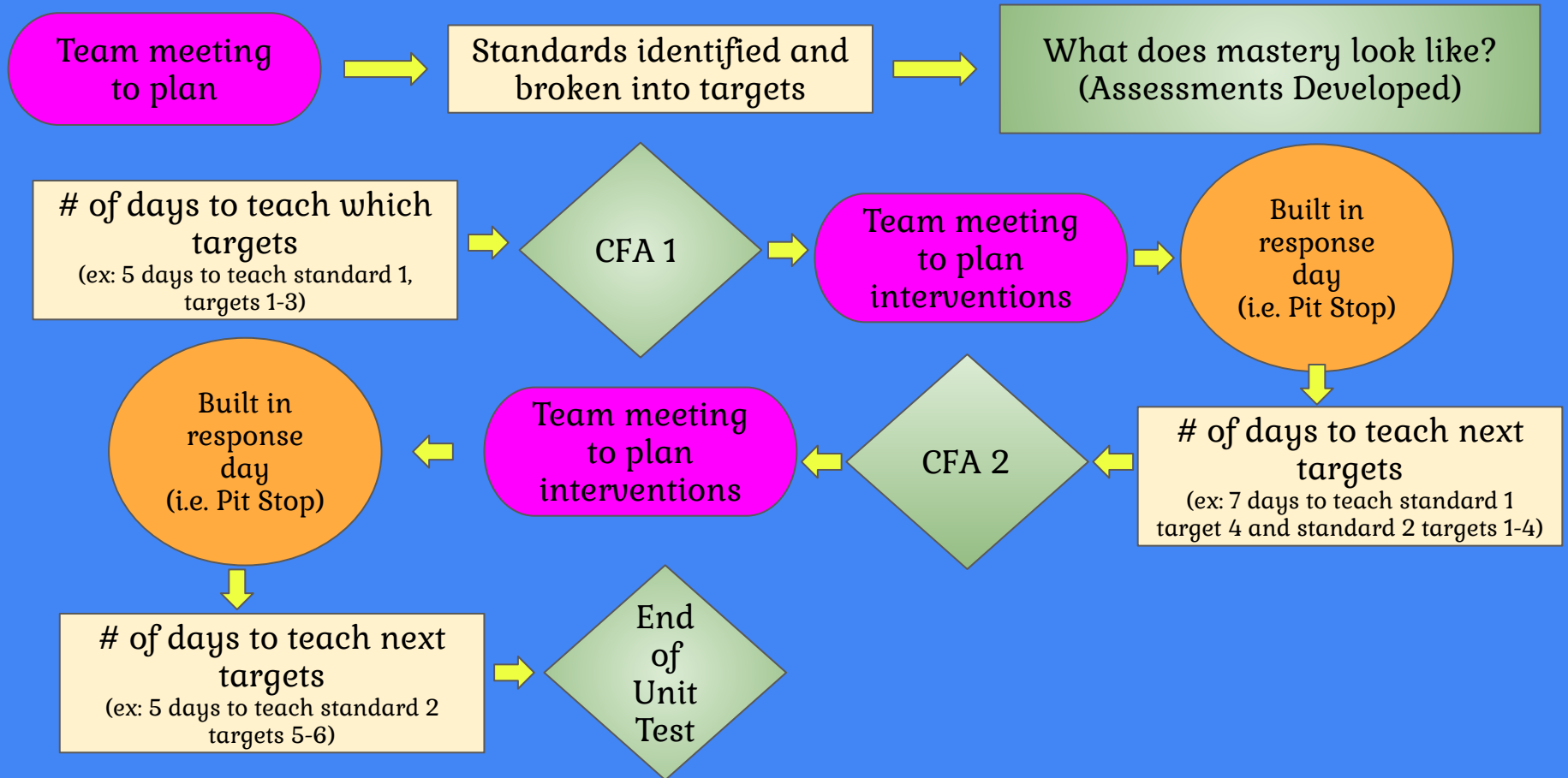


Develop a Unit Plan to Include CFAs

1st Step: Before ANY lesson planning takes place!



Develop a Unit Plan to Include CFAs



Instructional Cycle

- Before Instruction
- During Instruction
- After Instruction

- PLC Questions:**
1. What do we want all students to learn?
 2. How will we know if they have learned it?
 3. How will we respond when they don't learn?
 4. How will we respond when they already know?

START HERE

1

Teachers:

- Determine essential standards
- Create a proficiency map

1

Teachers:

- Unpack essentials for unit
- Discuss proficiency scales
- Identify prerequisites

1 2

Teachers create a CFA plan:

- Unit pre-test
- Common checks for understanding (exit slips, do now, questioning strategies, quizzes, etc.)
- Midpoint assessment (CFA)
- Calendar of checkpoints (10 day max)

1 2

Teachers create an end of unit assessment.

1

Teachers discuss best instructional strategies.

2

Students take unit pre-assessment.

3

Teachers:

- Deliver mini-lessons based on student gaps in prerequisite skills.

2

Teachers:

- Analyze data
- Create prevention plan

2 3 4

Teachers:

- Analyze data
- Respond as needed

2

Students:

- Take end of unit assessment

