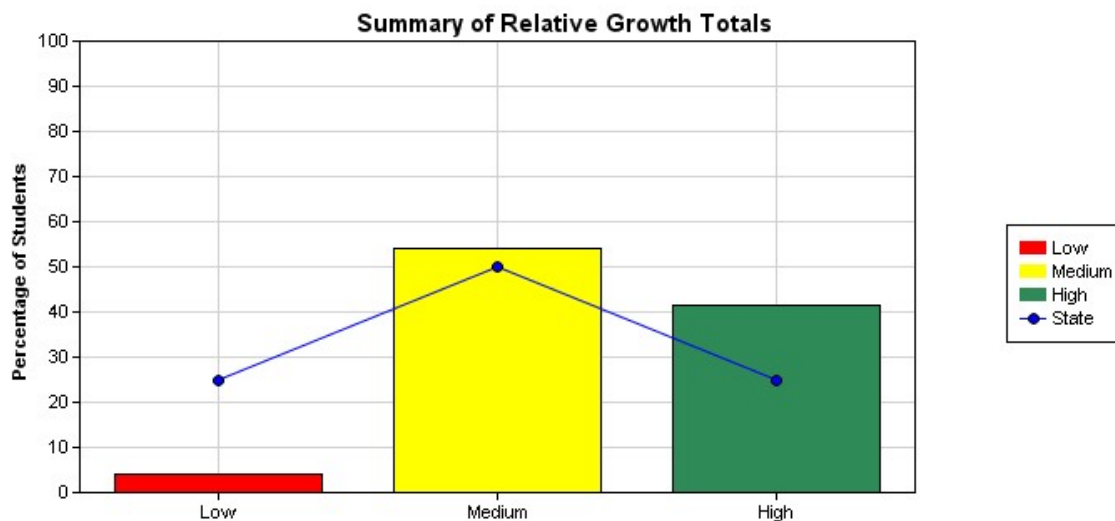
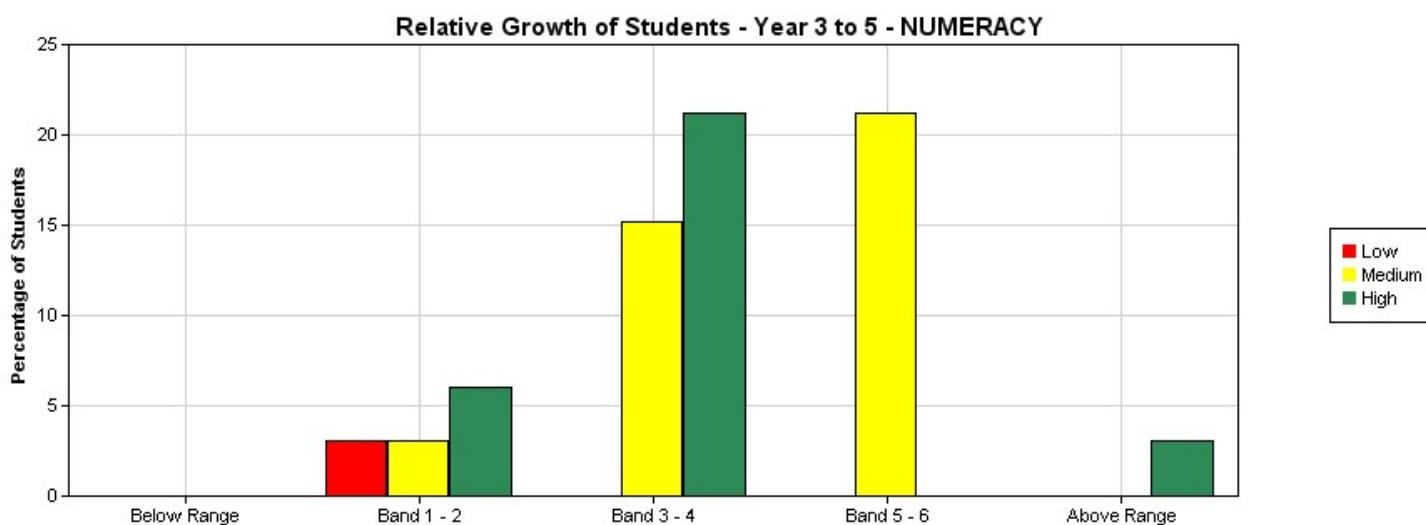


HARRISFIELD PRIMARY SCHOOL
Relative Growth Report - Graphical Summary for NUMERACY
National Assessment Program - Literacy and Numeracy Tests 2014
Year 5 - Class: All

[View - Information about this report](#)



	Low	Medium	High	Totals
Percentage of students - State	25	50	25	100
Percentage of students - School	4.17	54.17	41.67	100
No of Students - School	1	13	10	24



	Below Range			Band 1 - 2			Band 3 - 4			Band 5 - 6			Above Range		
	Low	Medium	High	Low	Medium	High	Low	Medium	High	Low	Medium	High	Low	Medium	High
% of Students	0	0	0	3.03	3.03	6.06	0	15.15	21.21	0	21.21	0	0	0	3.03
No of Students	0	0	0	1	1	2	0	5	7	0	7	0	0	0	1

Online tutorial assistance for reports can be accessed at <http://usingassessmentdata.vcaa.vic.edu.au/naplan/index.aspx>