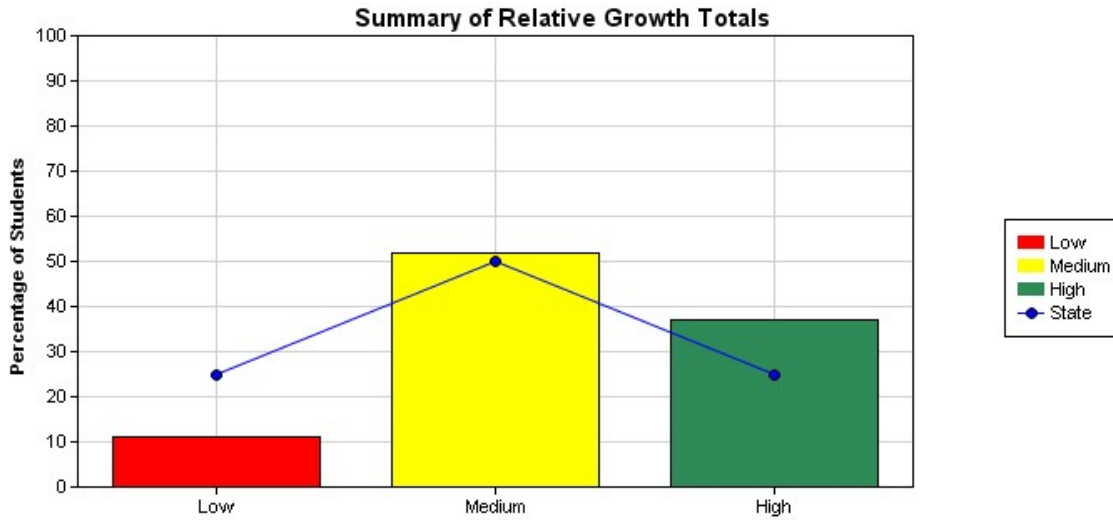


HARRISFIELD PRIMARY SCHOOL

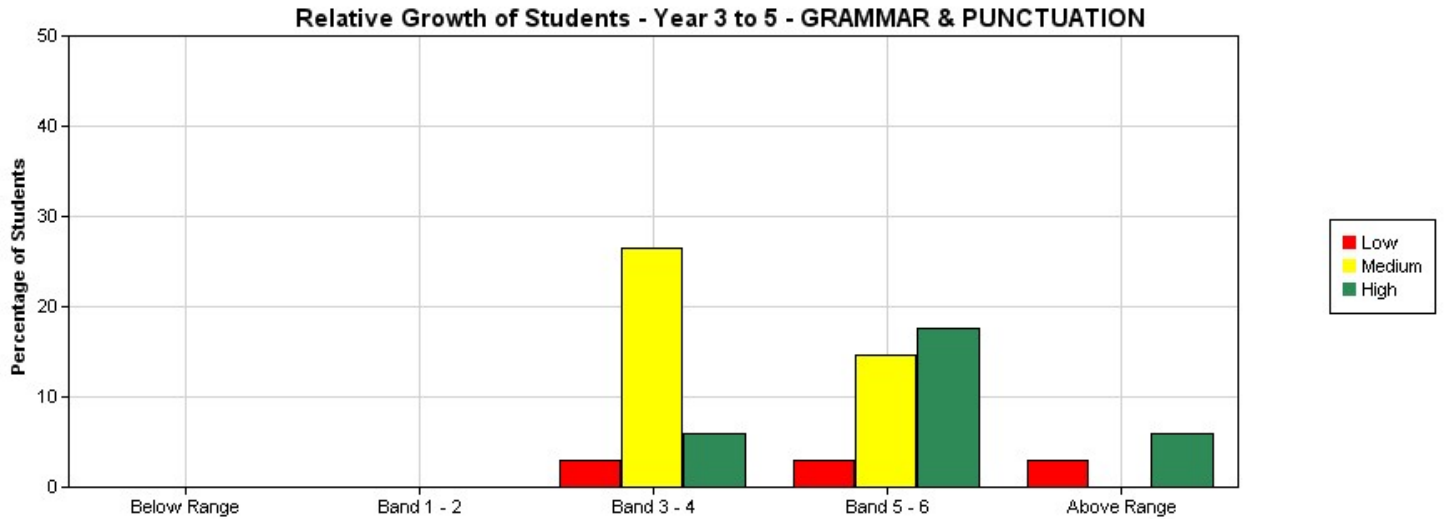
Relative Growth Report - Graphical Summary for GRAMMAR & PUNCTUATION

National Assessment Program - Literacy and Numeracy Tests 2014
Year 5 - Class: All

[View - Information about this report](#)



	Low	Medium	High	Totals
Percentage of students - State	25	50	25	100
Percentage of students - School	11.11	51.85	37.04	100
No of Students - School	3	14	10	27



	Below Range			Band 1 - 2			Band 3 - 4			Band 5 - 6			Above Range		
	Low	Medium	High	Low	Medium	High	Low	Medium	High	Low	Medium	High	Low	Medium	High
% of Students	0	0	0	0	0	0	2.94	26.47	5.88	2.94	14.71	17.65	2.94	0	5.88
No of Students	0	0	0	0	0	0	1	9	2	1	5	6	1	0	2