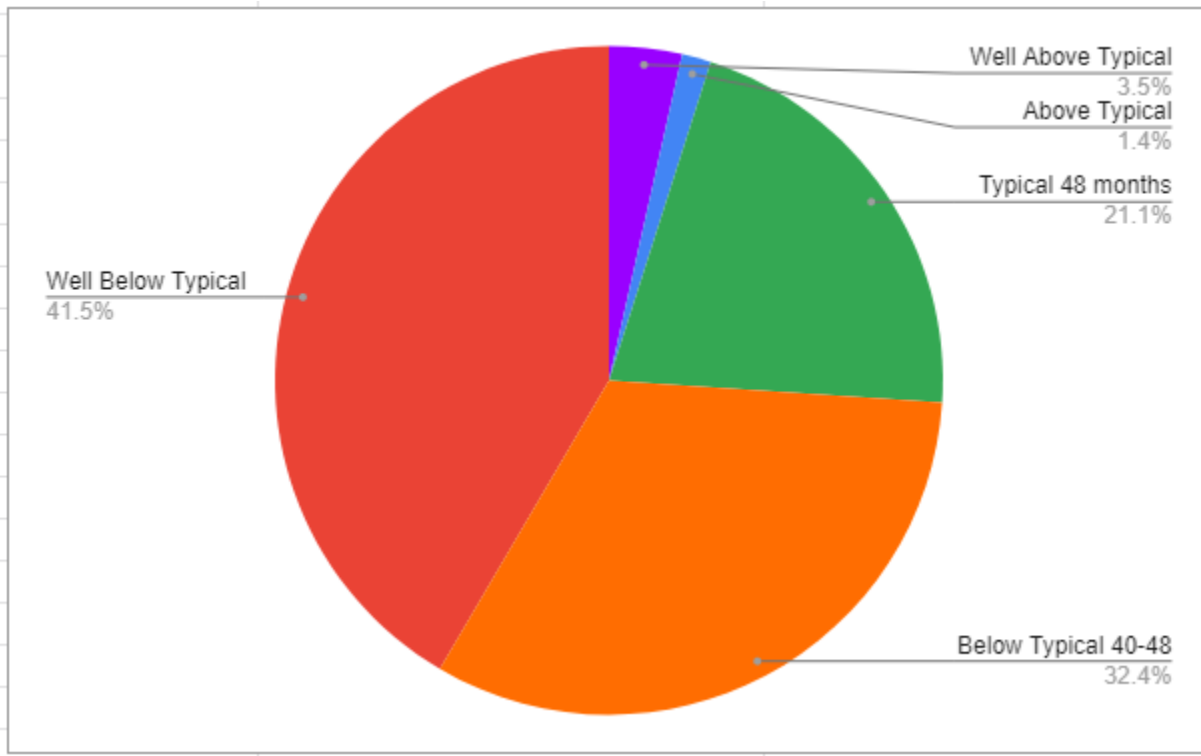
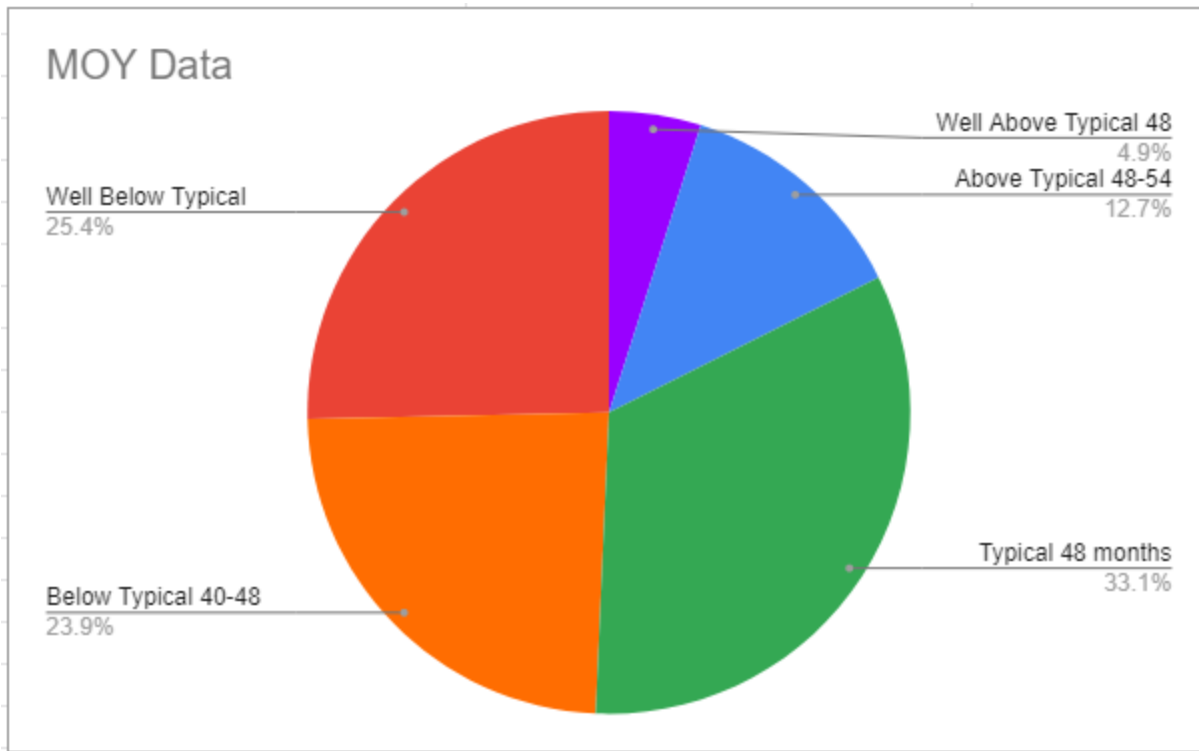


A	B	C	D	E	F	G
BOY	Well Above Typical 48 - 60 months <ul style="list-style-type: none"> Tells or gestures to adult about any danger or injury Bargains with other children Uses indirect requests Stays on topic during a conversation 	Above Typical 48-54 months <ul style="list-style-type: none"> Speaks with inflection describing an event or action Participates in conversations and discussions 	Typical 48 months <ul style="list-style-type: none"> Uses correct words to request an object Requests food and drink be passed at the table Participates in conversations and Asks questions related to another person's statement in order to maintain a conversation Takes turns in a true conversation 	Below Typical 40-48 months <ul style="list-style-type: none"> Pairs gestures and speech similar to adult level Carries on a conversation Makes conversation repairs when the listener has not understood Requests permission 	Well Below Typical 36-42 months or below <ul style="list-style-type: none"> Asks "is?" or "do?" Changes speech depending on the listener Talks on the phone and waits for turn to respond Responds to and makes verbal greetings Asks who questions. Requests clarification "Huh?" "What?" 	Total # of students
School		5	2	30	46	59
TOTAL		5	2	30	46	59
		4%	1%	21%	32%	42%



MOY	Well Above Typical 48 - 60 months <ul style="list-style-type: none"> Tells or gestures to adult about any danger or injury Bargains with other children Uses indirect requests Stays on topic during a conversation 	Above Typical 48-54 months <ul style="list-style-type: none"> Speaks with inflection describing an event or action Participates in conversations and discussions 	Typical 48 months <ul style="list-style-type: none"> Uses correct words to request an object Requests food and drink be passed at the table Participates in conversations and Asks questions related to another person's statement in order to maintain a conversation Takes turns in a true conversation 	Below Typical 40-48 months <ul style="list-style-type: none"> Pairs gestures and speech similar to adult level Carries on a conversation Makes conversation repairs when the listener has not understood Requests permission 	Well Below Typical 36-42 months or below <ul style="list-style-type: none"> Asks "is?" or "do?" Changes speech depending on the listener Talks on the phone and waits for turn to respond Responds to and makes verbal greetings Asks who questions. Requests clarification "Huh?" "What?" 	Total # of students
Alonso	2	2	5	1	1	11
Beas	1	0	4	11	4	20
De La Pena	1	5	14	0	1	21
Fierro	0	1	5	7	5	18
Li	2	3	6	4	6	21
Mercado	1	2	6	5	7	21
Reeder	0	0	5	5	3	13
Svoboda	0	5	2	0	5	12
Wehr	0	0	0	1	4	7
TOTAL	7	18	47	34	38	144
	5%	13%	33%	24%	25%	



A	B	C	D	E	F	G	
EOY	Well Above Typical 48 - 60 months <ul style="list-style-type: none"> Tells or gestures to adult about any danger or injury Bargains with other children Uses indirect requests Stays on topic during a conversation 	Above Typical 48-54 months <ul style="list-style-type: none"> Speaks with inflection describing an event or action Participates in conversations and discussions 	Typical 48 months <ul style="list-style-type: none"> Uses correct words to request an object Requests food and drink be passed at the table Participates in conversations and Asks questions related to another person's statement in order to maintain a conversation Takes turns in a true conversation 	Below Typical 40-48 months <ul style="list-style-type: none"> Pairs gestures and speech similar to adult level Carries on a conversation Makes conversation repairs when the listener has not understood Requests permission 	Well Below Typical 36-42 months or below <ul style="list-style-type: none"> Asks "is?" or "do?" Changes speech depending on the listener Talks on the phone and waits for turn to respond Responds to and makes verbal greetings Asks who questions. Requests clarification "Huh?" "What?" 	Total # of students	
	Alonso	4	2	3	1	1	11
	Beas	3	2	11	4	0	20
	De La Pena	5	3	6	5	4	23
	Fierro	5	4	5	0	5	19
	Li	8	5	4	2	1	20
	Mercado	6	5	4	2	2	19
	Reeder	2	5	4	2	3	16
	Svoboda	3	5		1	4	13
	Wehr	0	0	1	1	4	6
	TOTAL	36 24%	31 21%	38 26%	18 12%	24 16%	147

